

L★SERWAR

Short manual

1. Connecting Taggers and Headbands

Operation 1. Activate your Laser Tagger. Firstly, activate only one Tagger (Laser Tag Gun). For example to activate [AK12 LT Predator](#) use special key located on the side of the Tagger.



Pic 1. Laser Tag Gun activation

Operation 2. Activate your Headband. Activate only one headband with a special switcher.



Pic 2. Headband activation

Please Note. During the activation Tagger and Headband should be placed no more than 10 feet (3 meters) from each other.

If your Headband is not connected to the Tagger (or connection was lost) it begins to flash and vibrate.

When the Tagger will find its Headband, then the Headband flashes several times and stops vibration.

You can check this connection between Tagger and Headband by pressing Tagger recharging button.



Pic 3. Checking connection with recharging button

After the pressing recharging button, your tagger will say "Medic" if it is correctly connected to its Headband. If you have a lot of taggers, repeat operation 1 and 2 consequently with all your Taggers and Headbands.

Operation 3. New game command. Activating game set (Tagger + Headband).

To activate your game set (Tagger + Headband) you can use «New Game» command from 3 types of devices:

- Special remote control devices ([Universal Remote](#), [Remote Control Pro](#), Remote Nano, etc.)
- Medkit Devices ([Medkit](#), [Command Post](#), [Smart Kit](#) etc.)
- PC or tablet, using "Configurator" software for Windows and Android.

To activate your game set point your [Universal Remote](#) or [Remote Pro](#) devices press «New game» button on your Universal Remote, or «Pult» and «New Game» buttons on Remote Pro.



Universal Remote



Control Pro

Pic 4. Remote «New Game» buttons

or simply press button on your [MedKit](#) (Medkit device should be switched on).



Pic 5. MedKit Device

Operation 4. Setting colors (making teams).

Each team has its own color. The player can hit another player only in the case they have different colors (except cases when players have activated "Friendly Fire" option).

So to play, game master should divide players minimum into two opposite teams and set them different colors.

If your laser tag rental has similar taggers, you can initially set them two different colors using laser tag Configurator software or from Remote control devices and then mark these taggers for example with color tapes.

If your laser tag rental has different taggers and players change teams very often, then it will be better to form teams for each play and set them different colors.

You can set a color for game sets with 2 types of devices:

- Special remote controls (Universal Remote, Remote Control Pro, Remote Nano, etc.)*
- PC or tablet, using "Configurator" software for Windows and Android.*

In gaming area, it is easier to use Remote control devices because they allow setting the color to many taggers all at once.

2. Making Settings

Operation 1. Laser Tag Configurator installing

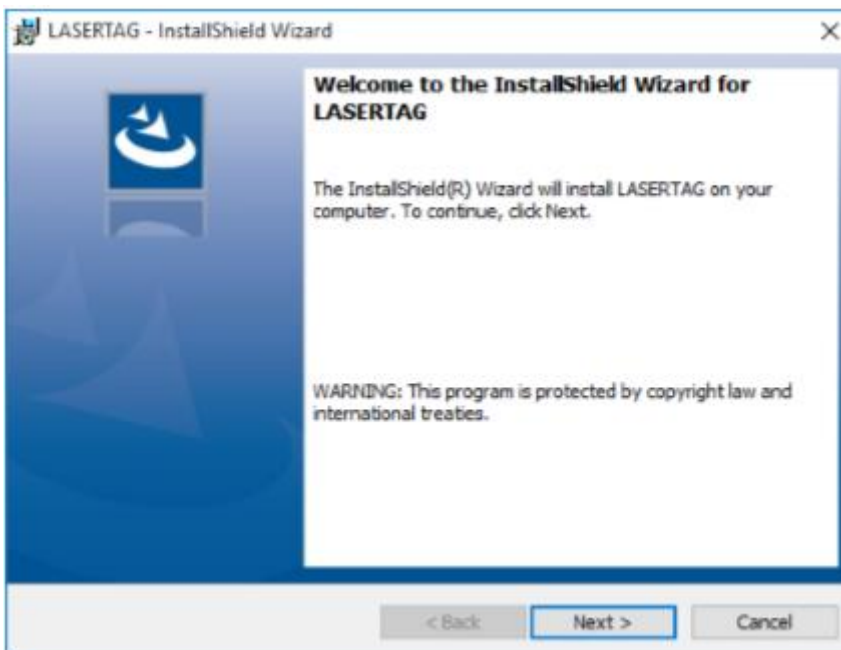
For laser tag guns and additional devices configuration, you can use special configuration software called Laser Tag Configurator that is available for Windows and Android operation systems.

1. Download the latest version of Laser Tag Configurator for Windows here:
http://laserwar.ru/index.php?do=static&page=soft_laserwar

or install Android app from Google Play (available only for tablets)

<https://play.google.com/store/apps/details?id=ru.laserwar.lasertagconfigurator>

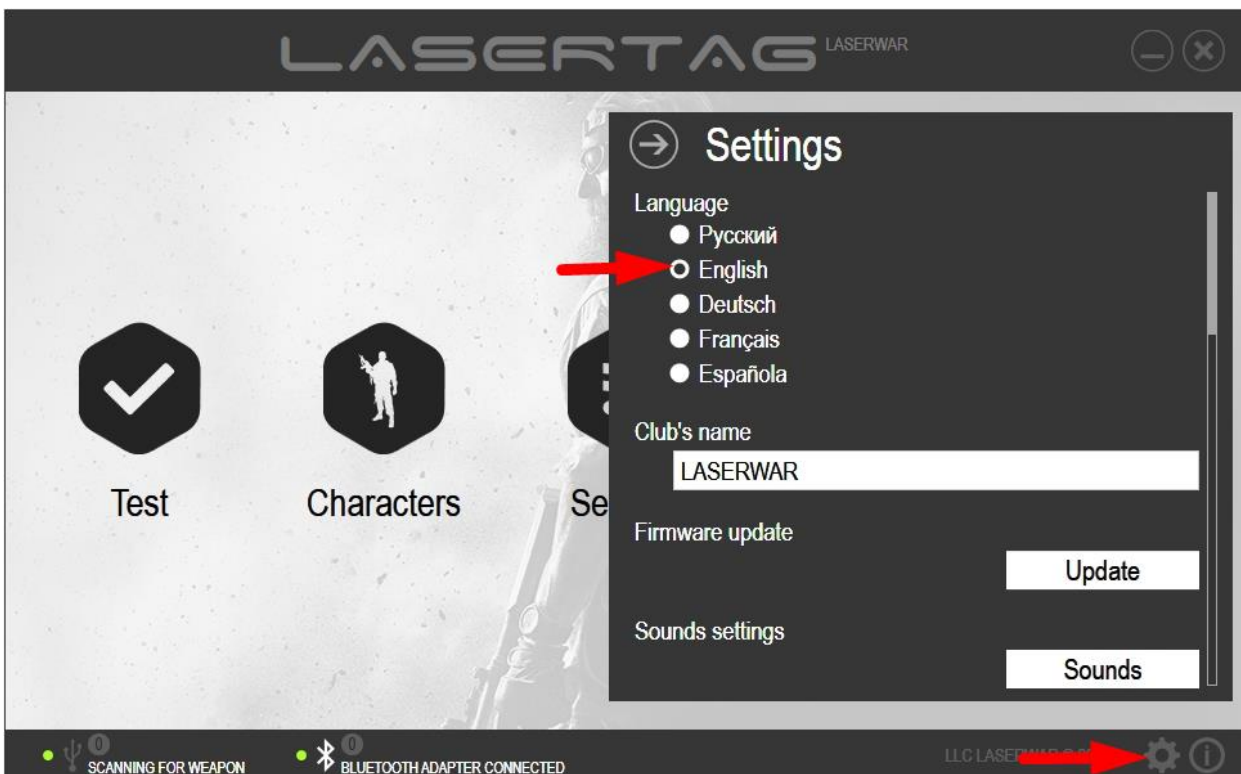
2. Install Laser Tag Configurator



Pic 6. Configurator installation window

3. Launch Laser Tag Configurator
4. Switch Laser Tag Configurator to your language.

To switch Laser Tag Configurator to your language use icon in the right lower corner of the main window.



Pic 7. Language selection

4. Connect you Laser Tag Gun to your PC via Bluetooth

Operation 2. Laser Tag Configurator connecting

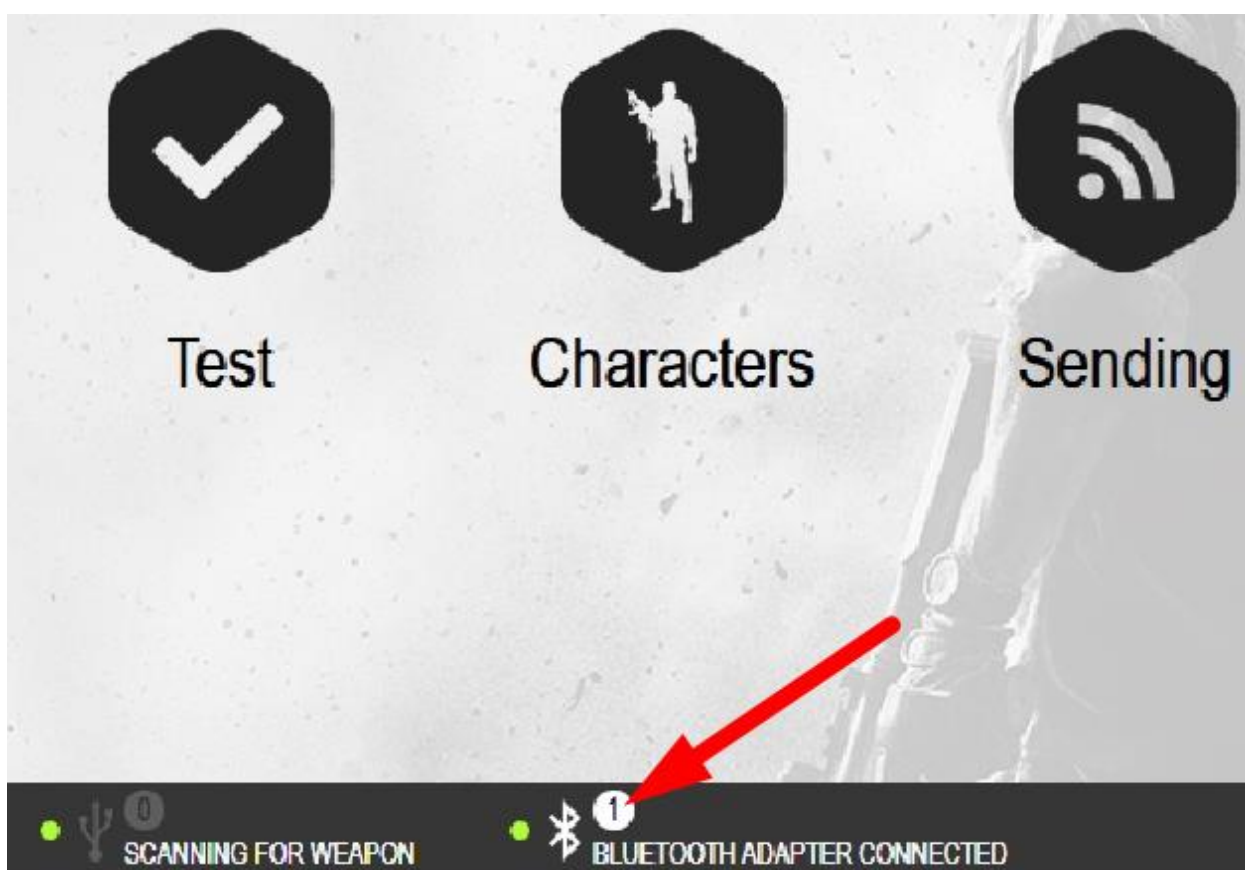
To start your equipment in game mode:

1. Turn on the power of your Laser Tag Gun. Tagger should beep after the activation.
2. Turn on the Headband. If your Tagger is properly connected to the headband, then LEDs of the headband will blink.

To start your game sets in configuration mode:

1. Launch Laser Tag Configurator application.
2. Connect [Bluetooth-adapter](#) to your computer if your PC or laptop is not equipped with a built-in Bluetooth and start Laser Tag Configurator. Laser Tag Configurator should display the message that Bluetooth adapter is connected.
3. Then **press recharging button of you Tagger and simultaneously turn on your Laser Tag Gun** (headband is not necessary to be activated).

You should hear the sound "setup mode is activated," and the bottom of Laser Tag Configurator window will display the indicator with the number of connected gaming sets (an example is shown in pic. 8).



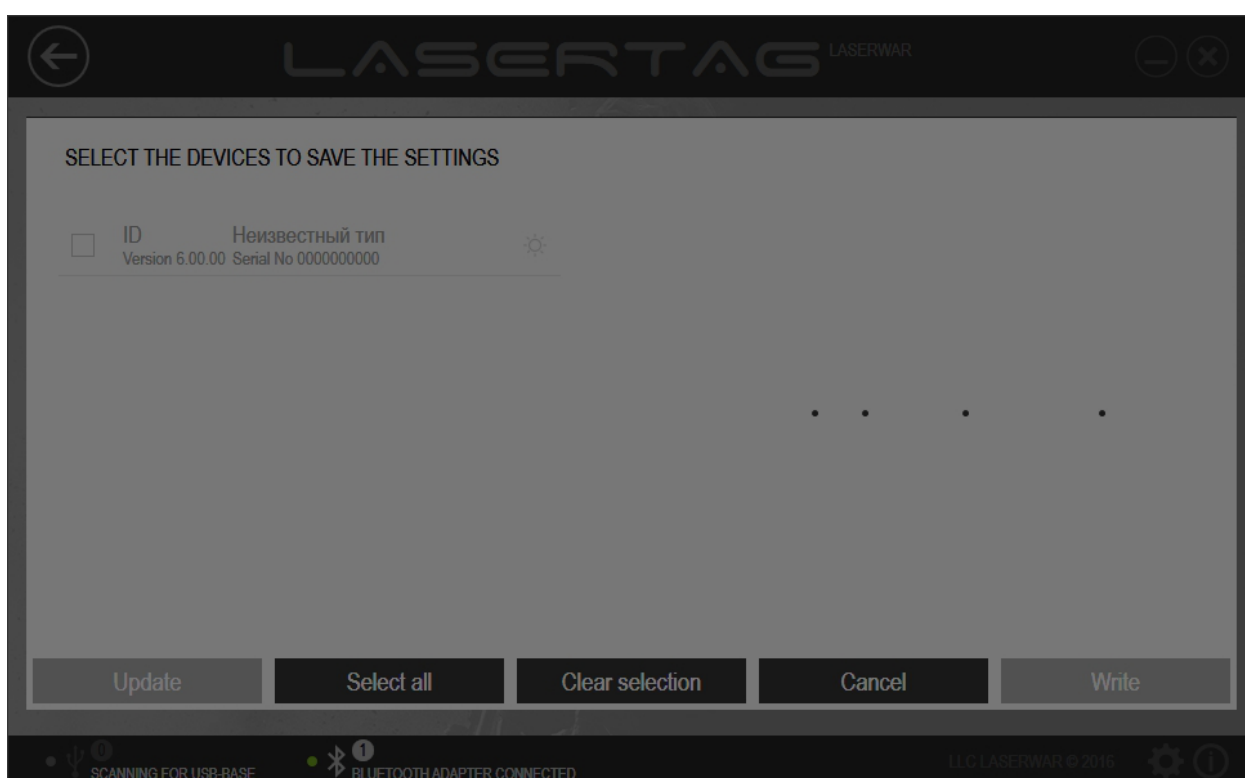
Pic 8. Number of connected devices

Operation 3. Laser Tag Configurator settings writing

Laser Tag Configurator provides large opportunities of configuration of tactical and technical characteristics of equipment. Selected options are available for recording in your game sets. Recording parameters are performed in "Characters", "Record", and "Settings" sections and have some features.

IMPORTANT. You can record parameters in multiple game sets at the same time if the recorded parameters are identical.

To record your settings into the equipment it should be connected to your PC or laptop via Bluetooth-adapter and should run in configuration mode (as it said before). If it is done, Configurator will open the Menu of connected devices (pic. 9).



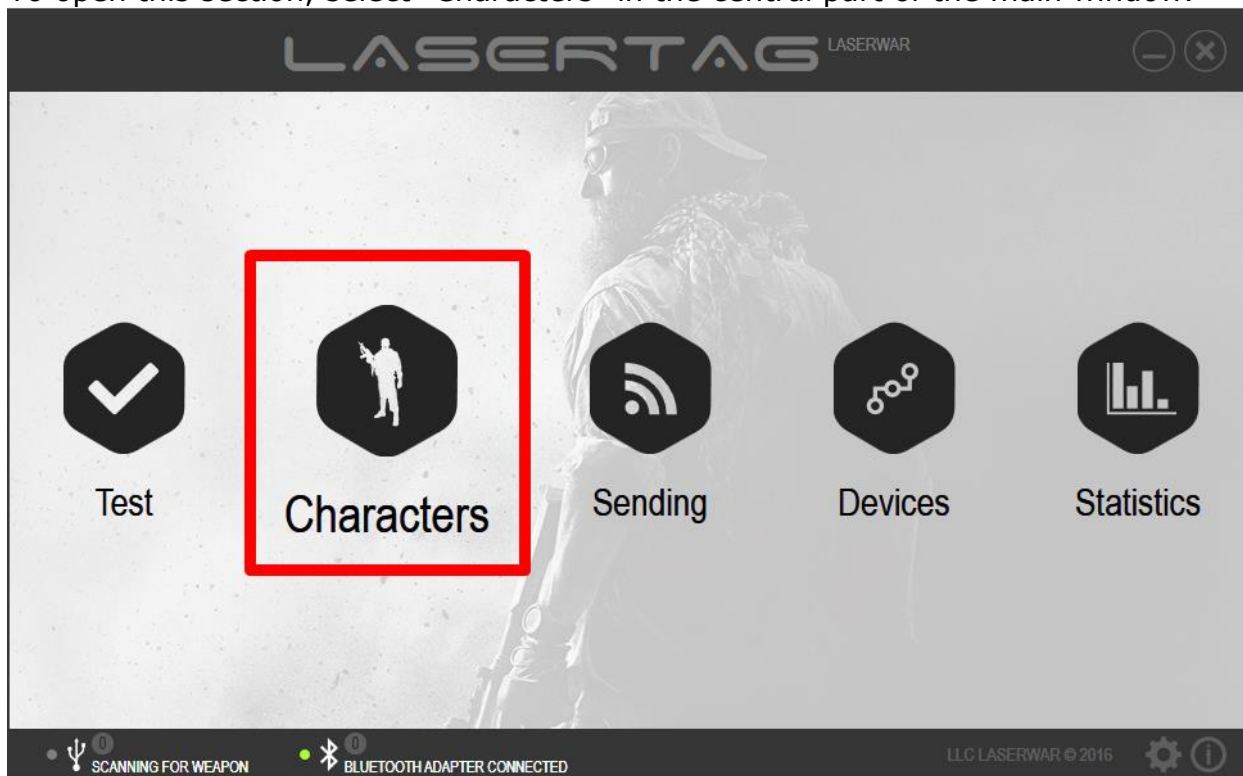
Pic 9. Selecting devices

Menu Characters Section

The section "Characters" is intended for creation and editing of game characters presets and recording them into laser tag guns. To work with this section your laser tag gun should be connected via Bluetooth and run in configuration mode. How to connect your equipment in configuration mode is described before.

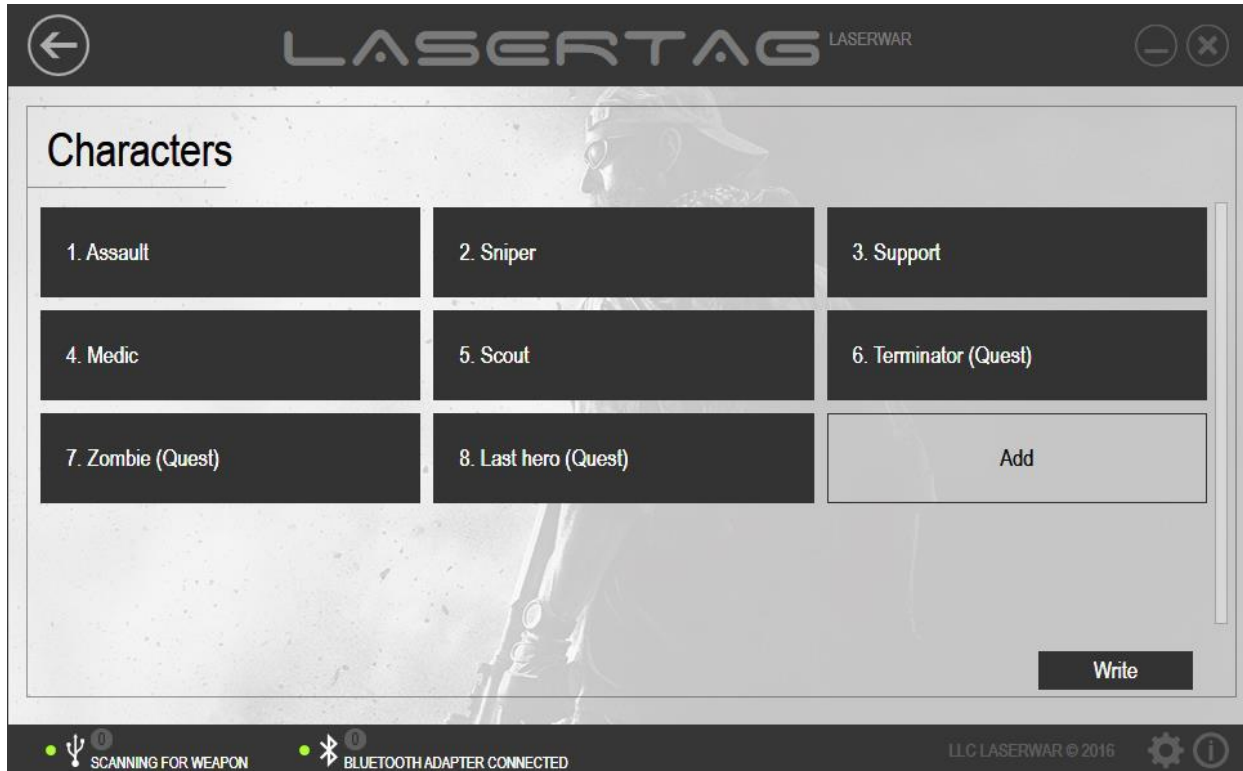
In the "Characters" section, you can view settings presets of performance characteristics for different player types, correct them, and create your own presets. This section allows you to quickly modify all parameters of tactical and performance characteristics of the game sets.

To open this section, select "Characters" in the central part of the main window.



Pic 10. Characters section

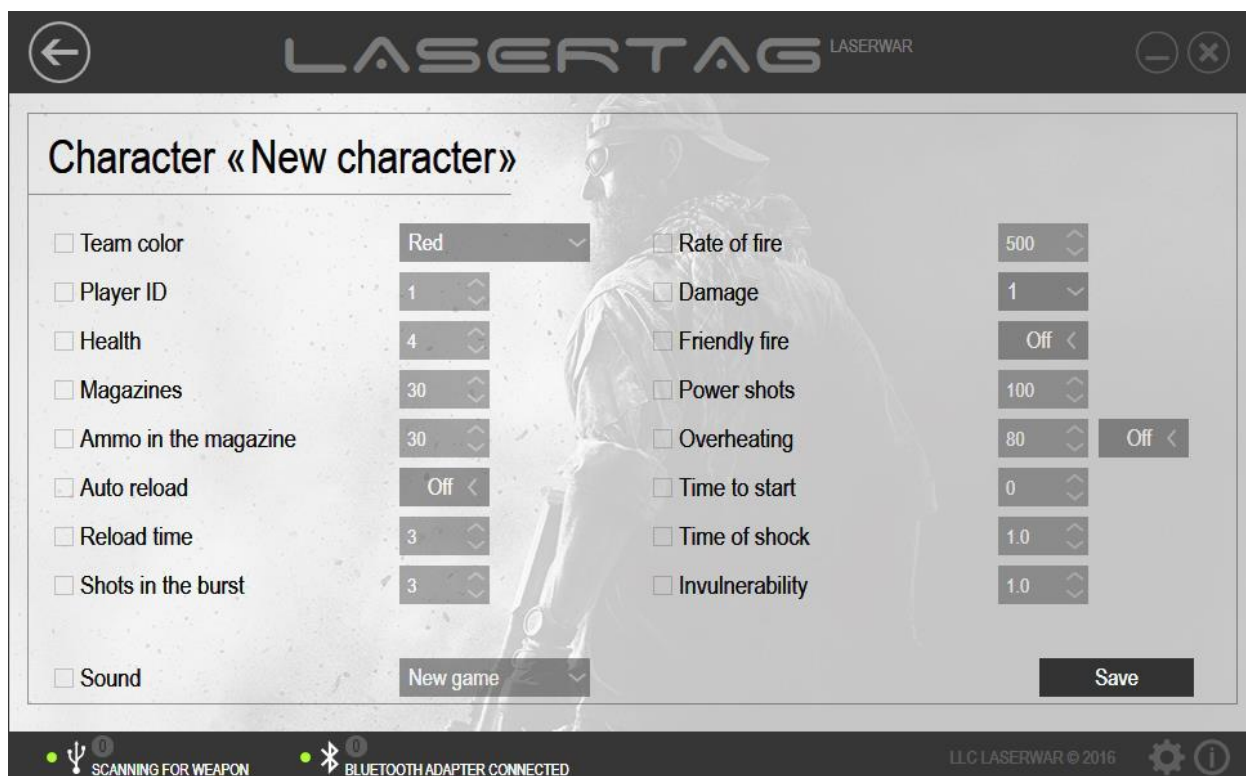
The main window of this Section contains a list of predefined characters with unique performance characteristics.



Pic 11. Selecting character preset

Now Characters Section has 8 preset characters (three of them are quests), and you can create your own if it is necessary. Note that quest characters are used only for one round.

If You want to create a new character click Add in this menu. You will see the window where you can define new character performance settings.



Pic 12. Adding new character

Enter the name of the character in the character field on the top of the window and begin to make settings.

To change some option setting, check the checkbox near the option name and select or write the required value. Only the fields that have checked boxes will be saved and updated when writing data. The parameters which have unchecked boxes remain unchanged after recording.

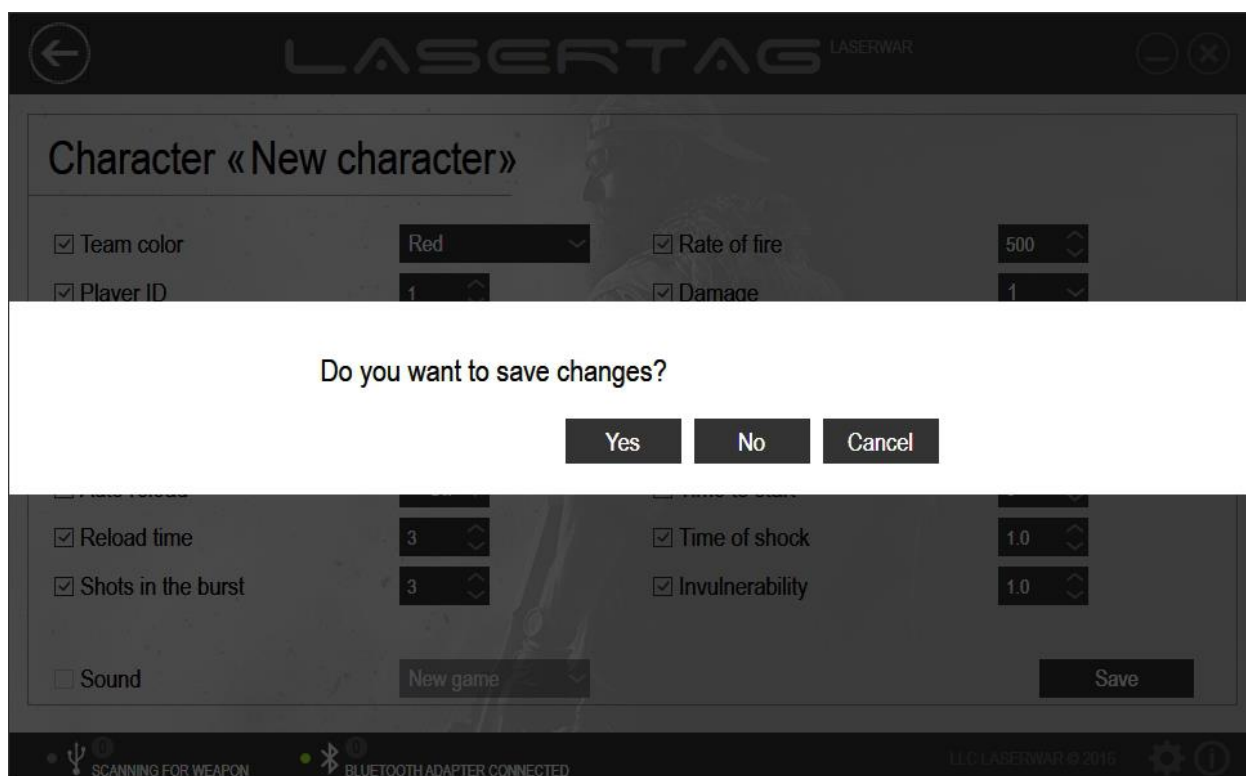
Standard settings for laser tag guns:

OPTION	DESCRIPTION
<ul style="list-style-type: none"> • TEAM COLOR 	Select a color from the drop-down list. You can have up to 4 teams with different colors ("Red", "Blue", "Yellow", "Green") playing simultaneously on one area. Players with identical colors can't hit each other (if "Friendly fire" option is not activated).

<ul style="list-style-type: none"> • PLAYER ID 	<p>Enter the numeric player ID. The allowable range for identifier is 0 - 125. ID is used to calculate the game statistics and must be unique. Players with similar ID can not hit each other.</p>
<ul style="list-style-type: none"> • HEALTH 	<p>Base number of hitpoints (health units). The parameter is set in the range from 1 to 999.</p>
<ul style="list-style-type: none"> • MAGAZINES 	<p>The number of gun magazines. The parameter is set in the range from 0 to 255.</p>
<ul style="list-style-type: none"> • AMMO IN THE MAGAZINE 	<p>The number of rounds in one magazine. As a rule, it corresponds to the real battle performance characteristics of the relevant gun class. The parameter is set in the range from 1 to 249.</p>
<ul style="list-style-type: none"> • AUTO RELOADING 	<p>If you activate this option, the laser tag game set will automatically reload a new magazine in the case of running out of ammo in the previous magazine. This option can be useful to everyone who produces laser tag equipment from LaserWar components kit because you have the ability not to place independent a reloading button.</p>
<ul style="list-style-type: none"> • RELOAD TIME 	<p>The amount of time (in seconds) it takes to reload new gun magazine. The parameter is set in the range from 1 to 255.</p>
<ul style="list-style-type: none"> • SHOTS IN THE BURST 	<p>The number of rounds in one in the burst after onetime long pull of a trigger. The parameter is set in the range from 1 to 255.</p>
<ul style="list-style-type: none"> • RATE OF FIRE 	<p>Imitation of real guns fire rate: from slow sniper bolt rifles fast machine-guns bursts. The parameter is set in the range from 10 to 990 rounds per minute.</p>
<ul style="list-style-type: none"> • DAMAGE 	<p>The amount of damage (in terms of health hit points) when this gun hits an enemy. Differentiated damage (making different damage for different guns) makes it possible to imitate performance characteristics of the real gun. So you can set damage depending on caliber or destructive power.</p>
<ul style="list-style-type: none"> • FRIENDLY FIRE 	<p>Friendly Fire is the mode that enables hitting the players of your team color. If "Friendly Fire" mode is not activated, the game set can't hit the players with game sets that have the same color. If "Friendly Fire" is activated, the game set will be able to hit game sets with the same color. We recommend you to play laser tag without activation Friendly Fire mode because it will be easier and more</p>

	interesting to most players. But if you are interested in a realistic battlefield you can activate it any time.
• POWER SHOTS	This option means the power of the infrared shot. The higher the value, the greater the distance of the shot, but also it increases the probability of ricochets. We recommend using 100% while playing outdoor and nearly 50% while playing at night or in buildings.
• OVERHEATING	The number of shots needed for imitation of gun barrel overheating. While using real guns shooting without interruption is prohibited by safety practices, because high barrel temperature heating can occur barrel distortion. So, game set emulates the effect of "the barrel overheating" after a too intense shooting, the sound of the shot becomes quieter, gun quits shooting, and stops lights. The player should wait for a few seconds until gun cool down; loud of the shot comes back, and player can continue his fight. Overheating of the barrel in real gun is the stronger the higher its fire rate and magazine capacity. This option can be switched off completely using the switch "On. / Off.". When the switch is set to "On" you should set the number of shots until the barrel is overheating. The parameter is set in the range from 10 to 255 shots.
• TIME TO START	Time in seconds from making respawn by remote control to player activation. The parameter is set but not active. It is activated only with a special command from Remote Control, "a new game - start delay." The parameter is set in the range from 0 to 3600.
• TIME OF SHOCK	Time of "shock" after been hit. During this period of time player's laser tag gun is not active and he can't shoot. While been shocked player's headband is vibrating and its LED's are gleaming. The parameter is set in the range of 0.1 to 65.0.
• INVULNERABILITY	Time (in seconds), when the player is invulnerable and can't be hit. This period of time gives players the ability to hide. The parameter is set in the range from 0.1 to 3.0.
• SOUND	The sound that is played when the player is activated.

When the settings of this character are made click Save. If Save button was not pressed, then when you exit from this section the program will ask you to confirm the changes (pic 13).

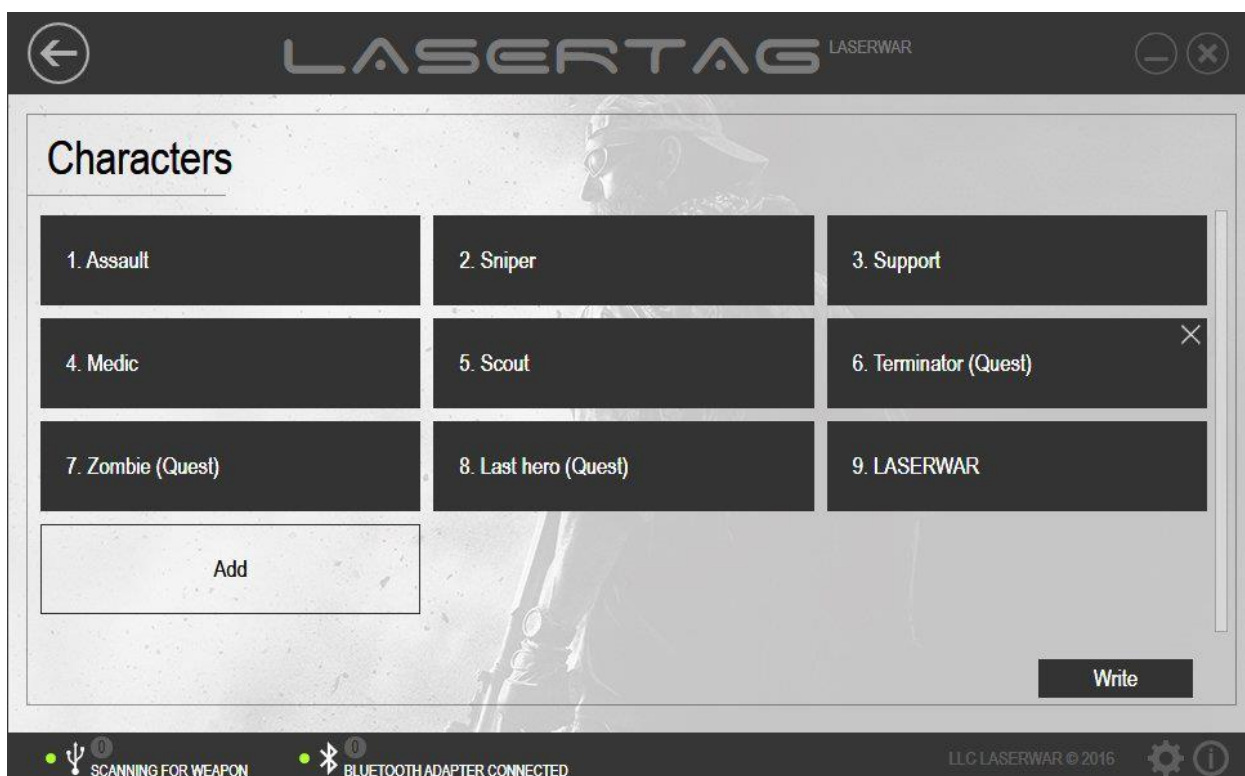


Pic 13. Saving new character


Click «Yes» button to save your changes, click «No» to discard them, or «Cancel» to return to editing character settings.

To updated new parameters into the memory of laser tag gun, press Wright button in the main window of this section (pic 14).

Only fields that have checked boxes will be saved and updated when writing data. The parameters, that have unchecked boxes, will remain unchanged after recording.



Pic 13. Writing settings

To delete a character, move the cursor on the button with its name in the main section of the window and click on the Xcross icon 

Please note that preset Characters can't be deleted.

We will be happy to answer all your questions by e-mail sales@LaserWar.us or you can visit our website <http://www.LaseWar.US>